

MALIKA

Crochet Lights



Details

MALIKA

Crochet Lighs

Handmade in Marrakech

Each pendant is handcrafted by women in a small village community near Marrakech. By partnering with these women we aim to help keep their traditional skills alive and create a brighter future for them and their families.

To reflect their origin, the sculptural shapes are inspired by objects used in daily Moroccan life, like tagines, baskets, and pots.

The Luxury of Choice

The Malika collection includes 2 models (Wahad & Joosh Pendants), which are available in 4 sizes and 16 standard colours (in solid or two-colour formats) making the options almost endless.

They are suitable for residential and commercial spaces as a single feature pendant lamp or hung together in pairs, groups or clusters of like or different models, sizes and colours.

Materials

Viscose 'kitan' thread on handmade brass rings.

Lead Times

Each pendant is handmade to order. Allow 3-6+ weeks depending on quantity. Inquire for current lead times.

Packaging

Flat-packed in a signature Hamimi satchel and boxed in recycled cardboard cartons for economical shipping.

Shipping

Worldwide delivery via DHL Express from Marrakech.

Colour Samples

Material colour sample kits can be ordered online.

Installation

To be installed by a qualified electrician. Simple installation instructions are provided.

Light Fittings

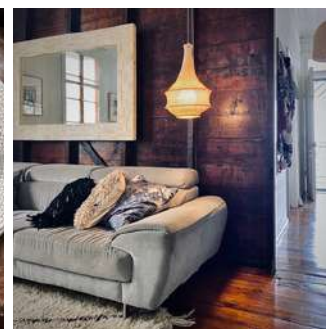
Supplied as lampshades only. Designed to fit standard pendant light sets. Suitable certified light fittings are available worldwide in a wide range of colours from www.creative-cables.com. See our website for details.

Light Bulbs

To be used with LED bulbs only to a maximum of 15W. A selection of suitable bulbs is available worldwide from www.creative-cables.com. See our website for details.

Cleaning & Care

Clean regularly with a feather duster, lint roller and/or vacuum with a furniture nozzle attachment. Can be wiped clean with a lightly dampened cloth.



WAHAD

Pendant



Please note that heights and weights are approximate and may vary slightly due to the handmade nature of these pieces.

Custom Sizes

Custom sizes may be available upon request.



www.hamimide.com

Colours

WAHAD Pendant



Soft White



Beige



Moroccan Clay



Taupe



Honey



Mink



Marrakech Blush



Henna



Plum



Slate



Deep Teal



Kohl Black



Mustard



Metallic Gold



Metallic Silver



Metallic Blush

Custom Colours

Other colours may be available upon request.. Please inquire.

STANDARD

Can be ordered online

**Solid
Colour**

All One
Colour



**Two
Colours**

Top
Colour

Bottom
Colour

The colour change
occurs just below the
middle ring



CUSTOM SUGGESTIONS

Inquire to order. Cannot be ordered online.

Nous-Nous



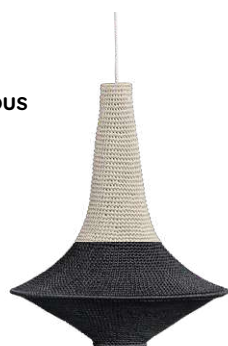
**Top &
Bottom
Tips**



**Random
Bands**



Nous-Nous



**Top &
Bottom
Tips**



**Random
Bands**



JOOSH

Pendant



Please note that heights and weights are approximate and may vary slightly due to the handmade nature of these pieces.

Custom Sizes

Custom sizes may be available upon request.



www.hamimide.com

Colours

JOOSH Pendant



Soft White



Beige



Moroccan Clay



Taupe



Honey



Mink



Marrakech Blush



Henna



Plum



Slate



Deep Teal



Kohl Black



Mustard



Metallic Gold



Metallic Silver



Metallic Blush

Custom Colours

Other colours may be available upon request.

STANDARD

Can be ordered online

**Solid
Colour**

All One
Colour

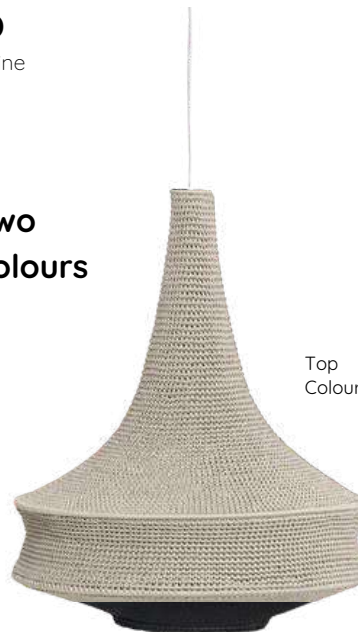


**Two
Colours**

Top
Colour

Bottom
Colour

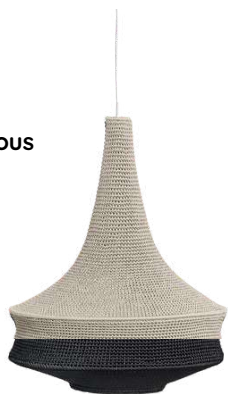
The colour change
occurs just below the
lower middle ring



CUSTOM SUGGESTIONS

Inquire to order. Cannot be ordered online.

Nous-Nous



**Top &
Bottom
Tips**



**Random
Bands**



Nous-Nous



**Random
Bands**



